



Claudin-11 Polyclonal Antibody

Catalog No	YP-Ab-16954
Isotype	IgG
Reactivity	Human;Mouse;Rat
Applications	WB;ELISA
Gene Name	CLDN11
Protein Name	Claudin-11
Immunogen	The antiserum was produced against synthesized peptide derived from human Claudin 11. AA range:158-207
Specificity	Claudin-11 Polyclonal Antibody detects endogenous levels of Claudin-11 protein.
Formulation	Liquid in PBS containing 50% glycerol, 0.5% BSA and 0.02% sodium azide.
Source	Polyclonal, Rabbit,IgG
Purification	The antibody was affinity-purified from rabbit antiserum by affinity-chromatography using epitope-specific immunogen.
Dilution	Western Blot: 1/500 - 1/2000. ELISA: 1/10000. Not yet tested in other applications.
Concentration	1 mg/ml
Purity	≥90%
Storage Stability	-20°C/1 year
Synonyms	CLDN11; OSP; OTM; Claudin-11; Oligodendrocyte-specific protein
Observed Band	20kD
Cell Pathway	Cell junction, tight junction. Cell membrane ; Multi-pass membrane protein .
Tissue Specificity	Lung,Spinal cord,
Function	function:Plays a major role in tight junction-specific obliteration of the intercellular space, through calcium-independent cell-adhesion activity.,similarity:Belongs to the claudin family.,subunit:Interacts with tetraspanin-3/TSPAN3.,
Background	This gene encodes a member of the claudin family. Claudins are integral membrane proteins and components of tight junction strands. Tight junction strands serve as a physical barrier to prevent solutes and water from passing freely through the paracellular space between epithelial or endothelial cell sheets, and also play critical roles in maintaining cell polarity and signal transductions. The protein encoded by this gene is a major component of central nervous system (CNS) myelin and plays an important role in regulating proliferation and migration of oligodendrocytes. Mouse studies showed that the gene deficiency results in deafness and loss of the Sertoli cell epithelial phenotype in the testis. This protein is a tight junction protein at the human blood-testis barrier (BTB), and the BTB disruption is related to a dysfunction of this gene. Alternatively spliced transcript



variants encoding different iso

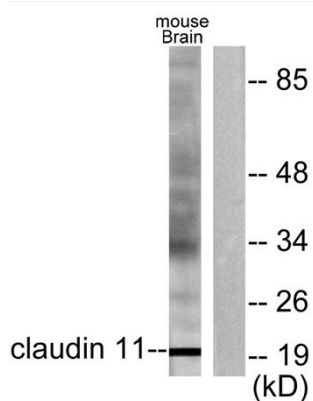
matters needing attention

Avoid repeated freezing and thawing!

Usage suggestions

This product can be used in immunological reaction related experiments. For more information, please consult technical personnel.

Products Images



Western blot analysis of lysates from mouse brain, using Claudin 11 Antibody. The lane on the right is blocked with the synthesized peptide.